

### SPECIAL FEATURES

- LASER WELDED FLUSH DIAPHRAGM
- QUICK CONNECT / DISCONNECT FOR EASY CLEANING
- SUITABLE FOR FOOD, DAIRY & PHARMACEUTICAL INDUSTRIES

### APPLICATIONS

DIAPHRAGM SEALS ARE PROVIDED IN THE INSTRUMENTS LIKE PRESSURE GAUGES, SWITCHES, TRANSMITTERS IN ORDER TO ISOLATE THE SENSING ELEMENT FROM THE MAIN SERVICE DUE TO ITS CORROSIVE, VISCOUS AND SEDIMENTED NATURE AND TO AVOID CLOGGING AND SOLIDIFICATION.

THESE SEALS ARE USED IN HYGIENIC APPLICATIONS WHERE PURITY IN PROCESS IS ESSENTIAL - TYPICALLY IN FOOD, DAIRY BEVERAGES AND PHARMACEUTICAL INDUSTRIES.

### SPECIFICATIONS

#### STANDARD VERSION

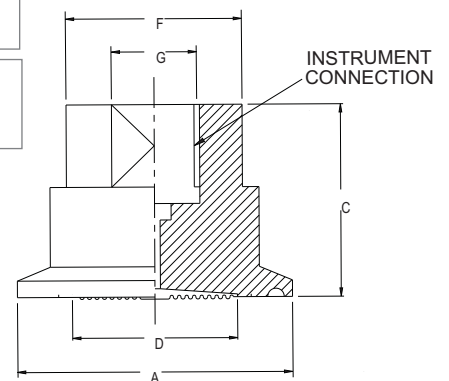
(COMPATIBLE WAAREE MODEL : AD (NS 50 mm & 63 mm), AE, AH, AI, AL (NS 100 mm & 150 mm) & BE

Seal Type	:	S16 = -1 to 0 & 0 to 40 kg/cm <sup>2</sup> (Standard)
	:	S17 = -1 to 0 & 0 to 40 kg/cm <sup>2</sup> (Dry Seal only)
Process Temperature	:	10°C to 150°C or as per fill fluid
Instrument Connection	:	S16 = 1/2" BSP (F)
	:	S17 = 1/4" BSP (F)
Process Connection	:	1 1/2" SANITARY SEAL (without clamp & gasket)
Mounting	:	Direct (Without capillary)

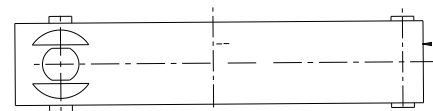
Diaphragm	:	AISI 316L SS
Body	:	AISI 316 SS
Fill Fluid	:	Glycerin



TYPE 'S16'



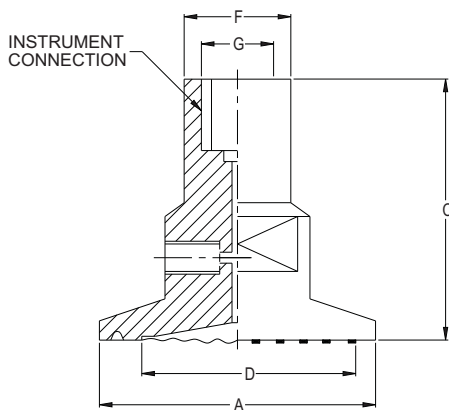
SEALING RING (OPTIONAL)



CLAMP (OPTIONAL)

### DIMENSIONS - STANDARD VERSION

TYPE 'S17'



Size	A	C	D	F	G	Approx. Wt. #
1.5"	50.5	48	32	19.50	1/4" BSP (F)	250.0
2"	64	48	40	19.50	1/4" BSP (F)	400.0
2.5"	77.5	48	52	19.50	1/4" BSP (F)	600.0

(# Weight in grams with box for Standard Model.)

Size	A	C	D	F	G	Approx. Wt. #
1"	50.50	35	22	29.5	1/2" BSP (F)	200.0
1 1/2"	50.50	35	32	38.5	1/2" BSP (F)	200.0
2"	64	35	40	51.5	1/2" BSP (F)	350.0
2 1/2"	77.5	35	52	64	1/2" BSP (F)	500.0

(# Weight in grams with box for Standard Model.)

Notes : • Drawings are not to scale. • All Dimensions are in mm.

# SANITARY SEAL ( CLAMP TYPE )

## DH

Example

### HOW TO ORDER

#### BASIC MODEL

#### CODE

#### OPTIONAL EXTRAS

[It is recommended that the size of the end connection of bottom mating part should be equivalent or greater than ½" Pipe.]

#### SEAL TYPE

**S16** -1 to 0 & 0 to 40 kg/cm<sup>2</sup> (Standard)    **S17** -1 to 0 & 0 to 40 kg/cm<sup>2</sup> (Dry seal only)

#### SANITARY SEAL

**YM** 1" SANITARY SEAL IN AISI 316 SS  
**YN** 1½" SANITARY SEAL IN AISI 316 SS (Standard)  
**YO** 2" SANITARY SEAL IN AISI 316 SS  
**YP** 2 ½" SANITARY SEAL IN AISI 316 SS

#### INSTRUMENT CONNECTION (\* For Dry Seal Type: S17)

**VO** 1/4" NPT (F)    **VN** 1/4" BSP (F) (Standard)\*    **VP** 3/8" BSP (F)  
**VM** ½" NPT (F)    **VL** ½" BSP (F) (Standard)

#### BODY

**CL** AISI 316 SS (Standard)    **CM** AISI 316L SS

#### BOTTOM MATING PART

**KF** 1" SANITARY SEAL IN AISI 316 SS    **KC** 2" SANITARY SEAL IN AISI 316 SS  
**KB** 1½" SANITARY SEAL IN AISI 316 SS    **KD** 2 ½" SANITARY SEAL IN AISI 316 SS

#### END CONNECTION OF BOTTOM MATING PART

**4ZB** ½" PIPE, Sch. 40 (Plain End)    **5ZB** 3/4" PIPE, Sch. 40 (Plain End)

NOTE : THREADED CONNECTIONS ARE AVAILABLE ON REQUEST. PLEASE CONSULT FACTORY.

#### DIAPHRAGM

**UJ** AISI 316L (Standard)

#### FILLING FLUIDS

**UF** GLYCERIN [10 to 150°C / 50 to 302°F] (Standard)    **UG** LIQUID PARAFFIN [10 to 200°C / 50 to 392°F]  
**UV** FOOD GRADE OIL [-20 to 140°C / -4 to 284°F]

#### CLAMP

**ZN** 1" CLAMP AISI 304 SS    **ZP** 2" CLAMP AISI 304 SS  
**ZO** 1½" CLAMP AISI 304 SS    **ZQ** 2 ½" CLAMP AISI 304 SS

#### GASKET (SEALING RING)

**FU** 1" SILICON GASKET    **GW** 1" PTFE GASKET  
**FX** 1½" SILICON GASKET    **GX** 1½" PTFE GASKET  
**FY** 2" SILICON GASKET    **GY** 2" PTFE GASKET  
**FZ** 2 ½" SILICON GASKET    **GZ** 2 ½" PTFE GASKET

#### REMOTE MOUNTING (With capillary of Max. Up to 2 Mtrs.)

SPECIFY IN METERS (e.g. 1.5 = 1.5 METERS 2.0 = 2 METERS)

#### CAPILLARY

**PE** AISI 304 SS    **PG** AISI 316 SS

#### CAPILLARY COVERED WITH ARMOUR (Applicable with PE or PG if selected)

**PF** AISI 304 SS    **PH** AISI 316 SS    **PI** PVC (Ambient Temp. Max. 60°C)

#### OTHER OPTIONS

**TB** HELIUM LEAK TEST    **TC** DRY SEAL ONLY WITHOUT INSTRUMENT    **GH** MATERIAL TEST CERTIFICATES\*

\* MATERIAL TEST CERTIFICATES WILL BE PROVIDED FOR WETTED PARTS ONLY WITH CHEMICAL COMPOSITION TESTING. FOR OTHERS, PLEASE CONSULT FACTORY.

Ordering Example: DH - XXX - XX - XX - XX - XX - XX - XX - XX - XX - 1Mtr. - XX - XX - XX

FOR OTHER OPTIONAL ITEMS, PLEASE CONTACT FACTORY FOR DELIVERY AND MINIMUM QUANTITY OF ORDER.

Note : Specifications and dimensions given in this product catalogue represents the state of engineering at the time of printing.  
 Modifications may take place and materials specified may be replaced by others without prior notice.